



Retrieve Deleted Records

By



2809 S. 160th St. Ste. #401
Omaha, NE 68130

Telephone: (402) 697 - 7575
Tollfree: (800) 228 - 6318

Web: <http://www.prodatacomputer.com>

Email Sales: sales@prodatacomputer.com
Email Tech Support: help@prodatacomputer.com

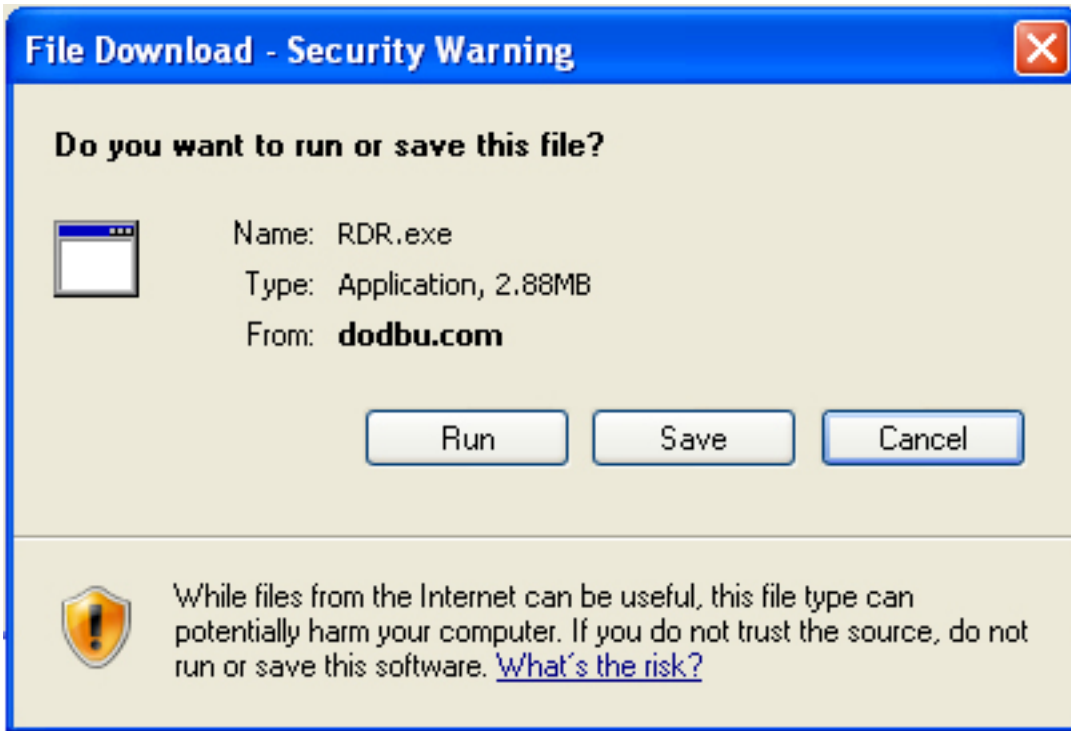
Table of Contents

Installation Instructions	4
RDR Instructions	9
File Parameter	9
Member Parameter	9
Record Number Parameters	9
Output File Parameter	10
Output File Member Parameter	10
Include Relative Record Numbers Parameter	10

Installation Instructions

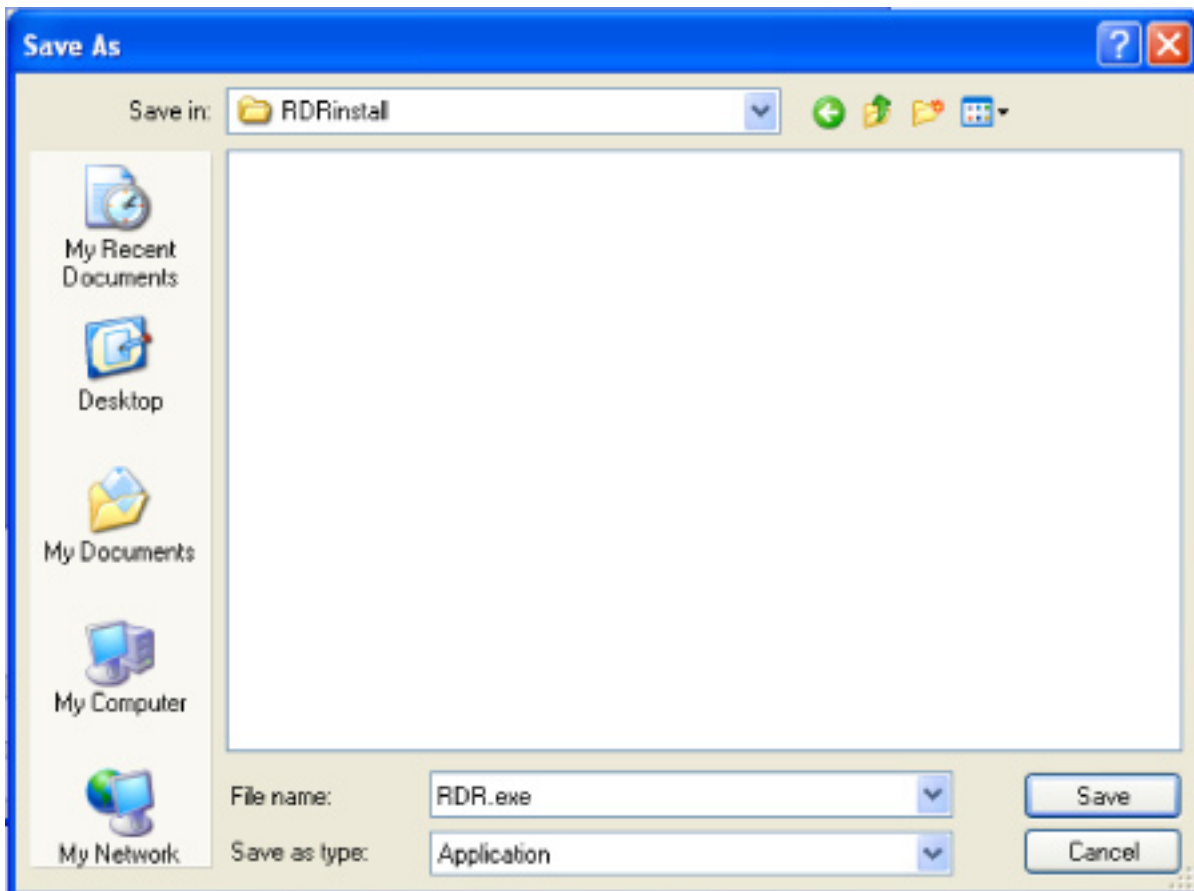
Step #1

Once you have clicked on the link to start the download process, the following screen will appear. Click on the Save button to save the installation file to your local computer.



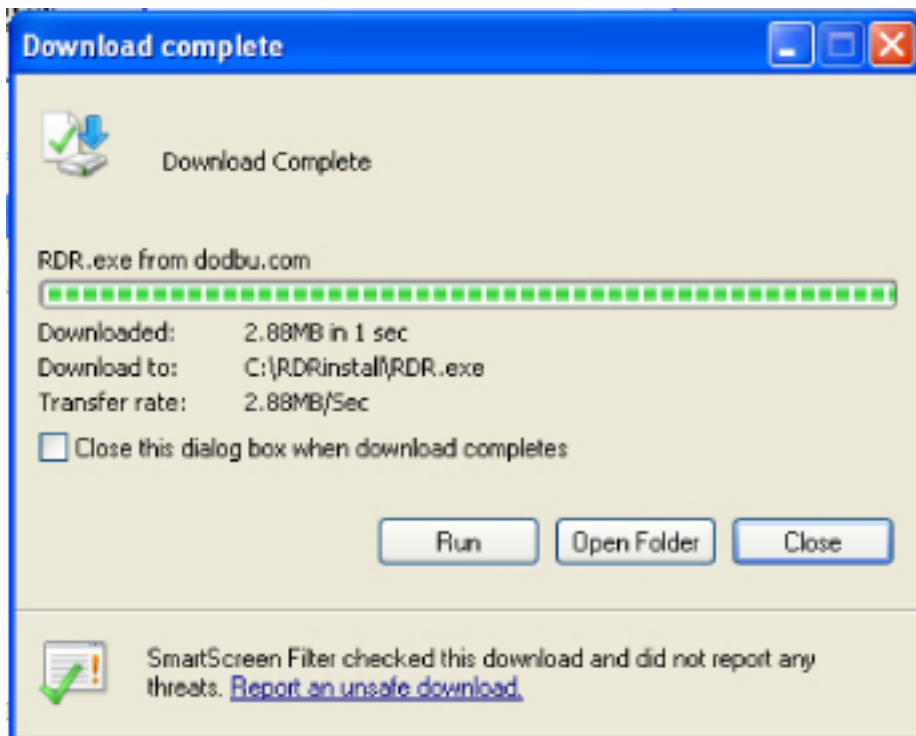
Step #2

Once you have clicked on the Save button, choose the directory to which you would like to store the executable.

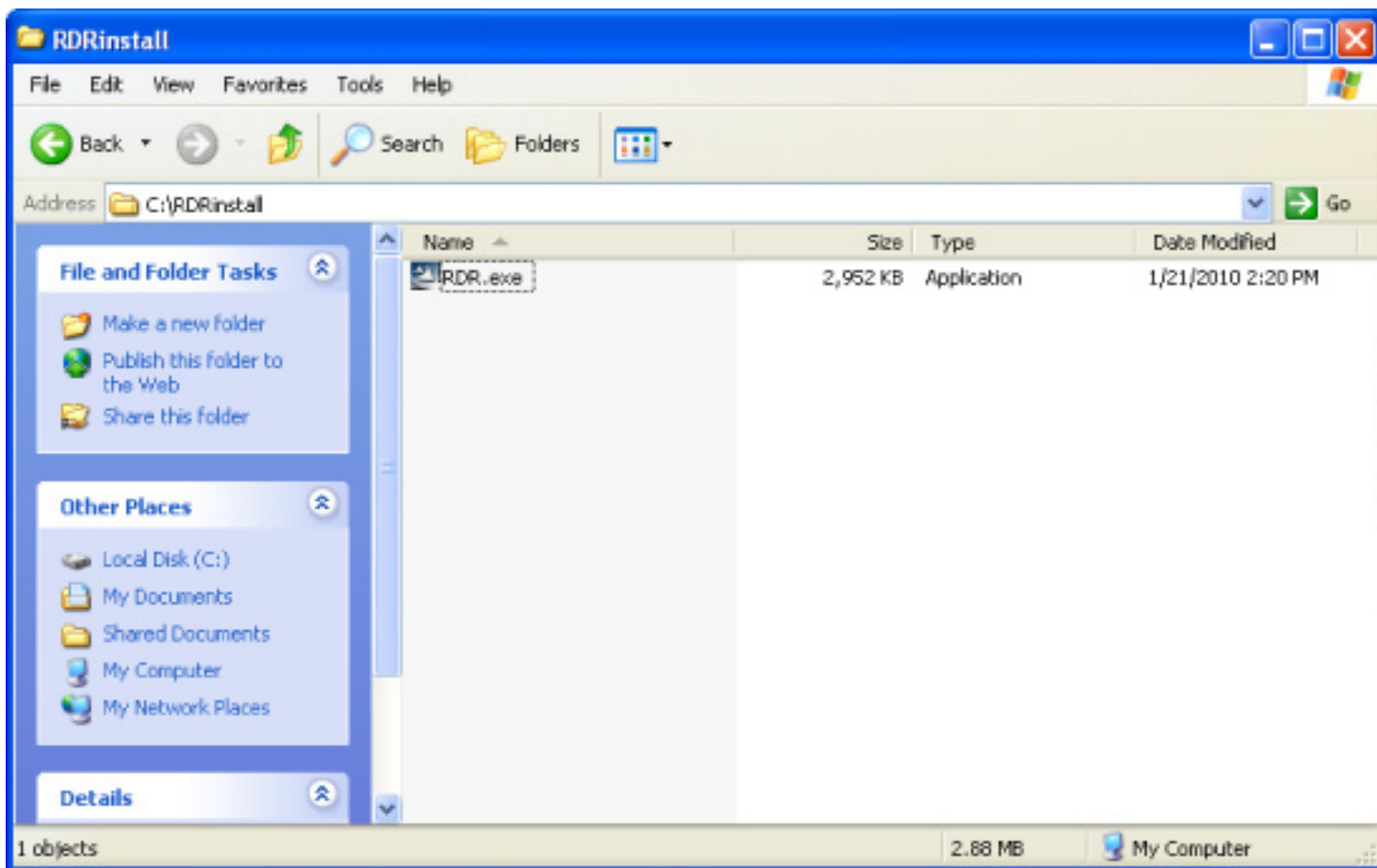


Installation Instructions

Step #1



Once you have clicked on the link to start the download process, the following screen will appear. Click on the Save button to save the installation file to your local computer.



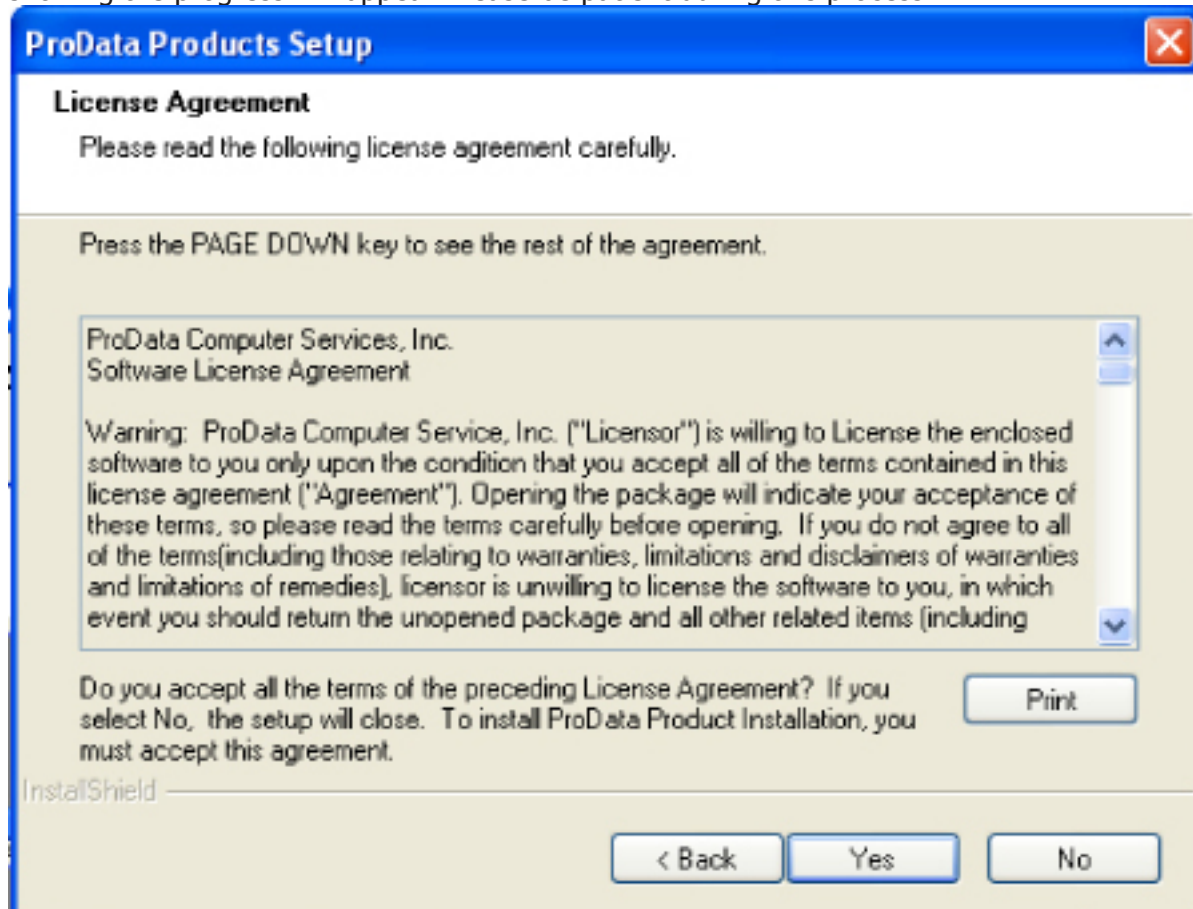
Step #2

Once you have clicked on the Save button, choose the directory to which you would like to store the executable.



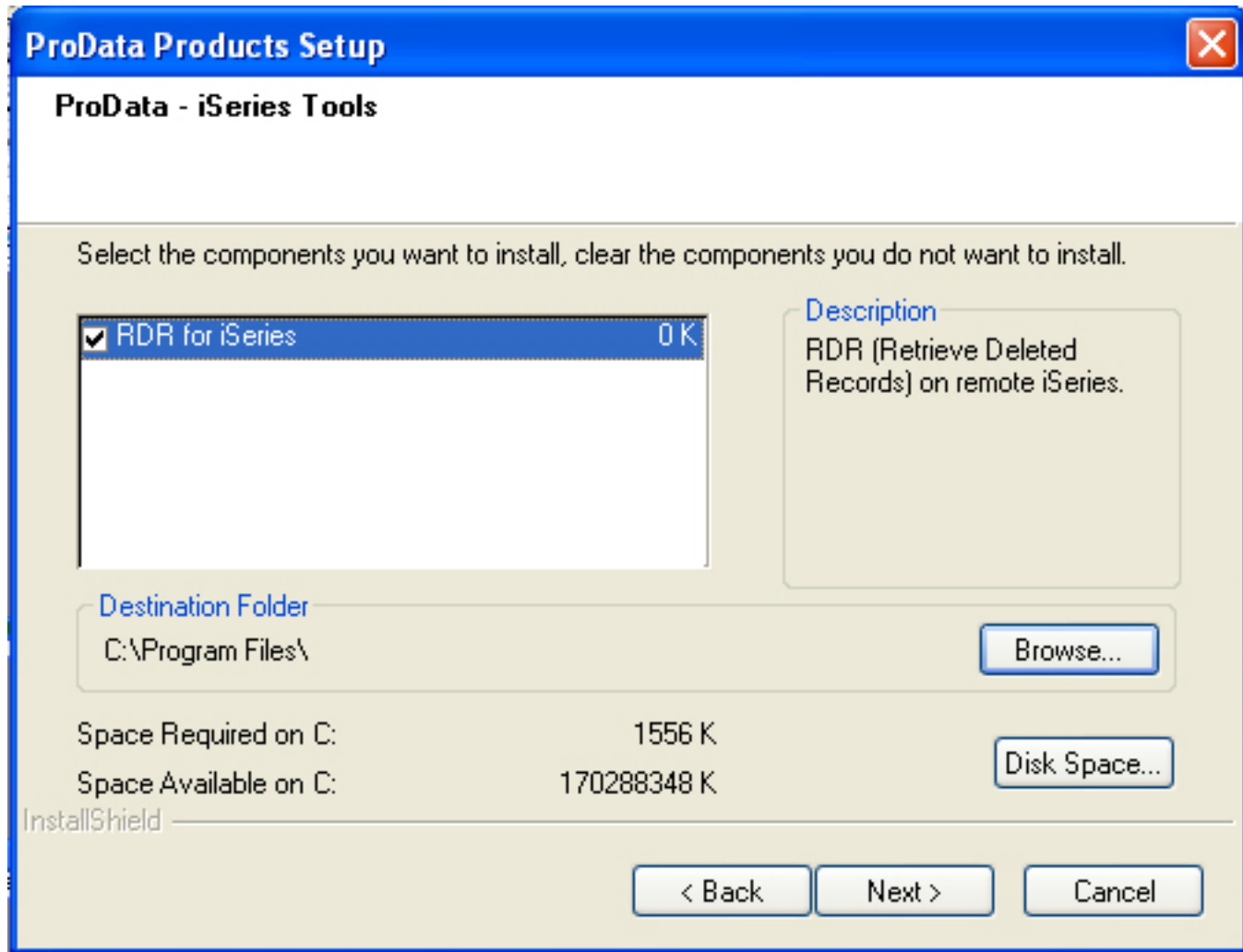
Step #3

Once you have clicked the Save button, the installation file will be downloaded to your local computer. A screen showing the progress will appear. Please be patient during this process.



Step #4

Once the installation file has been completely downloaded. Locate the executable on your computer and double click to begin installation.



Step #5

A splash screen will appear and a series of notices informing you of the process being performed. After which the following screen should appear. Click the Next button to continue the installation process.

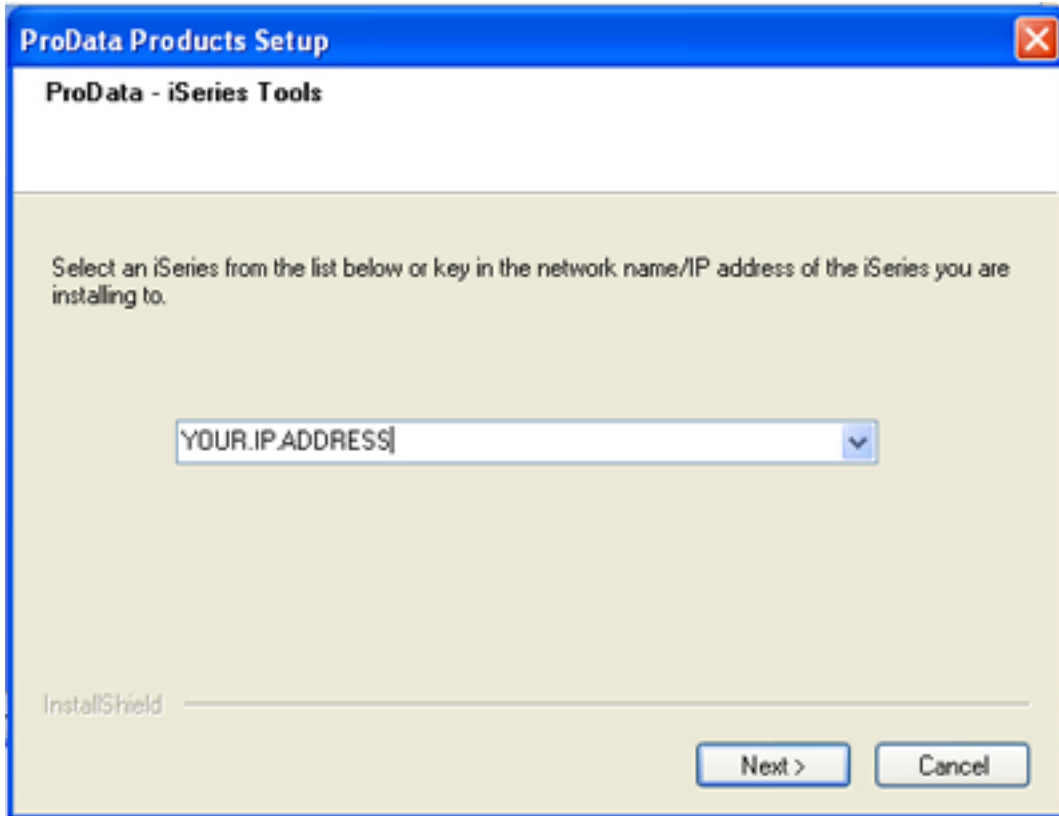


Step #6

Please read the License Agreement and upon accepting the agreement, click the Yes button to continue the installation process.

Step #7

This screen gives you the option to select which components you would like to install. Choose the appropriate options for the software you are installing.

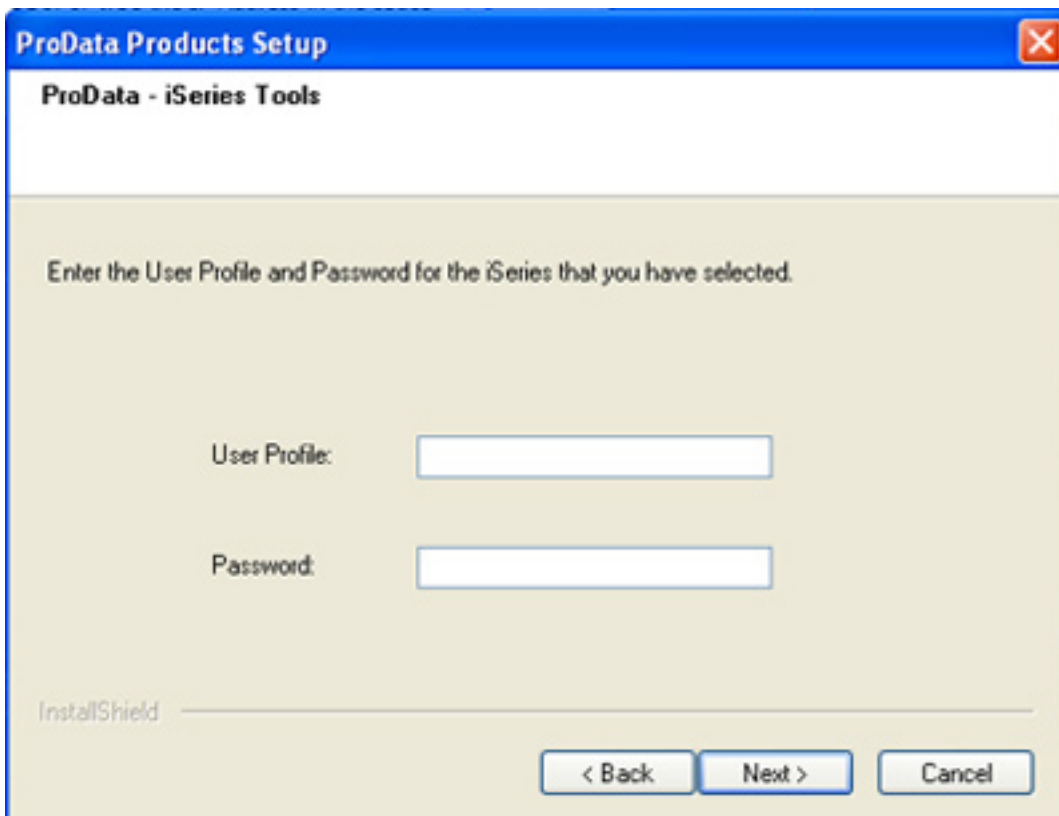


The screenshot shows a Windows-style dialog box titled "ProData Products Setup" with a close button (X) in the top right corner. The main title bar is blue. Below the title bar, the text "ProData - iSeries Tools" is displayed. The main area has a light beige background and contains the instruction: "Select an iSeries from the list below or key in the network name/IP address of the iSeries you are installing to." Below this text is a text input field containing the placeholder text "YOUR.IP.ADDRESS|". At the bottom left, the "InstallShield" logo is visible. At the bottom right, there are two buttons: "Next >" and "Cancel".

Step #8

The installation process requires a connection being established to your iSeries (AS/400) host computer. The following notice may appear informing you for the need of a connection.

Once you have verified the connection to your iSeries (AS/400) host, click the OK button to continue the installation process.

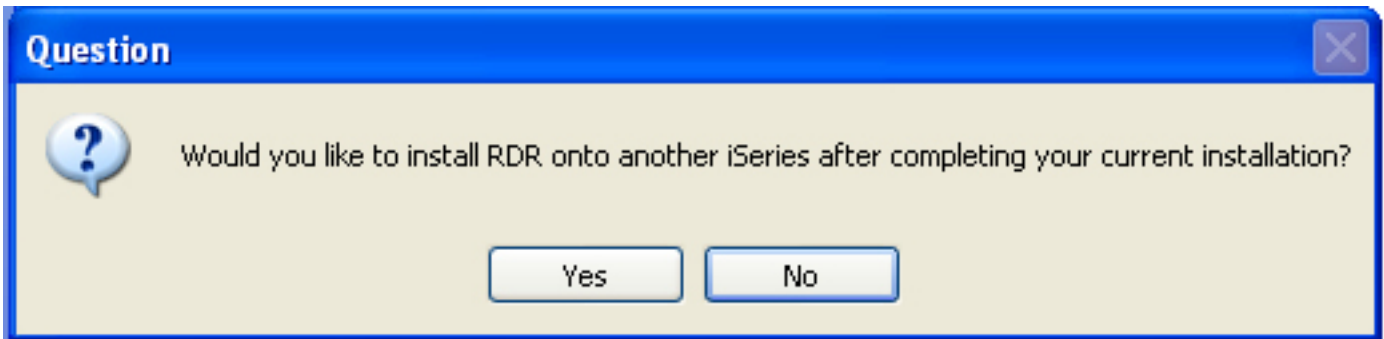


The screenshot shows a Windows-style dialog box titled "ProData Products Setup" with a close button (X) in the top right corner. The main title bar is blue. Below the title bar, the text "ProData - iSeries Tools" is displayed. The main area has a light beige background and contains the instruction: "Enter the User Profile and Password for the iSeries that you have selected." Below this text are two input fields. The first is labeled "User Profile:" and the second is labeled "Password:". At the bottom left, the "InstallShield" logo is visible. At the bottom right, there are three buttons: "< Back", "Next >", and "Cancel".

Step #9

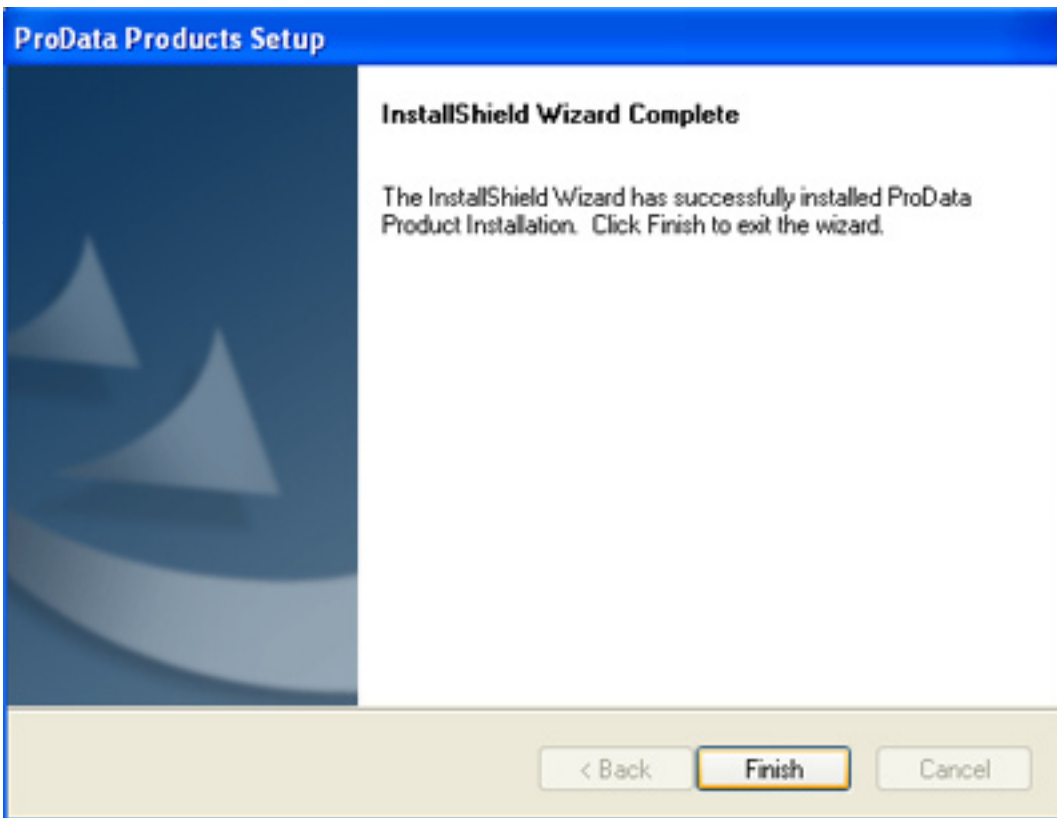
Either select the iSeries (AS/400) host computer where you wish to install DBU, or type the IP Address in the space provided of the iSeries (AS/400) host computer.

Once you have completed the iSeries (AS/400) host computer selection, click the Next button to continue.



Step #10

When you see the following screen, type a valid User Profile and Password for the iSeries (AS/400) host computer you are connected to in the space provided. Then click the Next button to continue the installation process.



AS/400) host computer, the
you wish to install the software
on to complete the installation

RDR Instructions

RDR (Retrieve Deleted Records) is a utility designed to retrieve deleted records from any physical file or member of a physical file. Records within RRN limits can be retrieved and the records can be put in a file specified by the user. No creation time is involved.

Key in the command "RDR" followed by a file name and then press "Enter" to execute or press "F4" to prompt for override parameters. The **RDR** prompt screen is displayed below:

```
Retrieve Deleted Records (RDR)

Type choices, press Enter.

File Name: . . . . .
Library Name: . . . . . *LIBL
Member Name: . . . . . *FIRST
From Record: . . . . . 1
To Record: . . . . . 999999999
Output File Name: . . . . . RDRDLTS
Output Library Name: . . . . . QTEMP
Output Member Name: . . . . . *OUTFILE
Include Relative Record #: . . . . *YES

Name
Name, *LIBL
Name, *First
1 to 999999999
1 to 999999999
Name, RDRDLTS
Name
Name, *OUTFILE
*YES, *NO

Bottom
F3=Exit F4=Prompt F5=Refresh F12=Cancel F13=How to use this display
F24=More keys

MA b 05/037
```

Figure 1

The input file is not changed in any way. The deleted records may be copied back into the original file.

File Parameter

- » File Name - enter name of physical file (PF).
- » Library Name - Enter name of library containing physical file entered above. Default is *LIBL.

Member Parameter

Member Name

- » Name - Name of member desired.
- » *FIRST - First member in file selected.

Record Number Parameters

- » From Record - Starting relative record number in file. Deleted records will be retrieved starting with this record in the file.
- » To Record - Ending relative record number in file. Deleted records will be retrieved ending with this record in the file.

Output File Parameter

- » Output File Name - File where deleted records will be placed. Output file cannot currently exist on your system. **RDR** will create the file in the library specified. The default will create a file called RDRDLTS in QTEMP.
- » Output Library Name - Library where output file is to be created.

Output File Member Parameter

- » Output Member name - Name of the member added to the output file. The default will be the Output File Name.

Include Relative Record Numbers Parameter

- » Include Relative Record Number -
 - *YES = Include a field in the output file for the original relative record number of the deleted record. This relative record number will be added to the end of the file layout.
 - *NO = The original relative record number is not appended to the file layout.

After filling in the correct information, press enter. When you press enter, you will receive a message saying "File contains __deleted records, __ active records".

If you currently own DBU and it is in your library list, **RDR** will complete by showing the message "__records retrieved from file, press Enter to continue". Pressing enter will then take you to the DBU Screen to show you the file with deleted records. If you do not have DBU, **RDR** will finish with the message "__ records retrieved from file, press Enter to continue". Pressing enter will then take you back to a command prompt screen.

The command keys that are listed on the bottom of the prompt screen are IBM standard. Pressing F13 will explain the command keys if you need additional assistance with them.

On-line Help is also provided.